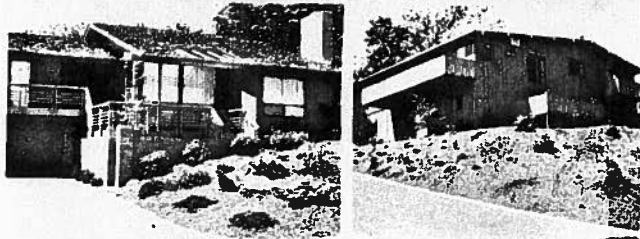
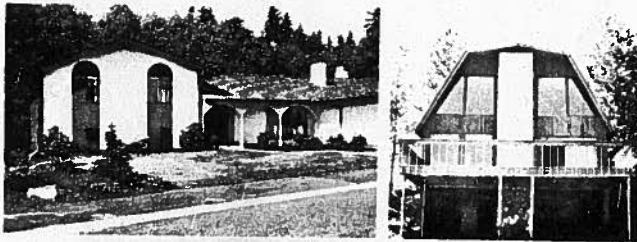


there's a "new town" in town

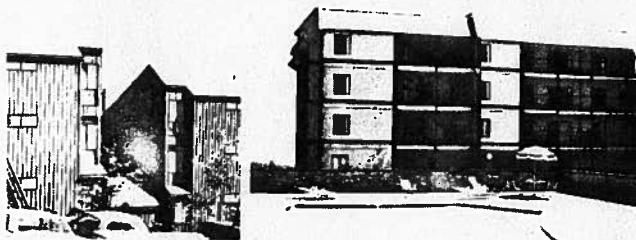


BEAUTIFUL HOMES—Mountain Park is becoming Portland's show place of exciting homes. Many unusual as well as conventional architectural styles are offered by several of the area's leading custom builders.

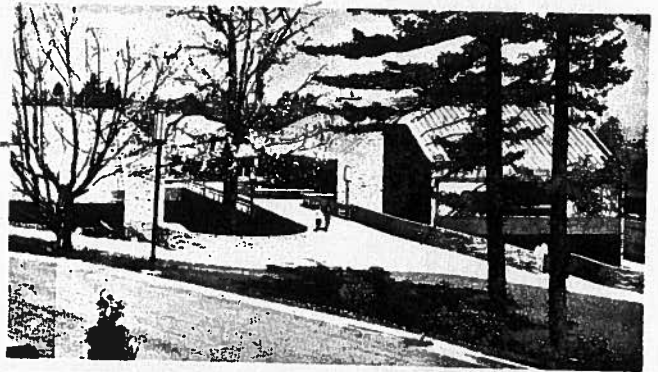


CAREFREE TOWNHOUSES

The advantages of owning a home, yet maintenance-free living . . . both offered by several townhouse complexes within the boundaries of Mountain Park.



APARTMENT LIVING in a prestige residential atmosphere. Apartments that appeal to young people, or those that suit the tastes of mature couples . . . both are available at Mountain Park.



RECREATION CENTER—Mountain Park's multi-million dollar Recreation Center offers all Mountain Park residents a full 50-meter Olympic swimming pool, exercise areas, saunas, a delightfully-furnished lounge, a "swingin'" teenage lounge and a nursery for the young tots.

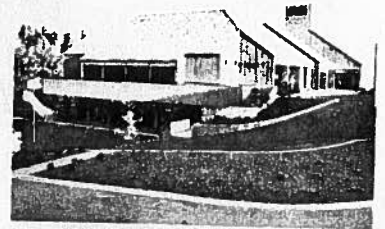


EQUESTRIAN CENTER

The Northwest's most beautiful and well equipped horse facility is at the disposal of Mountain Park residents. Full equestrian services, stables for 100 horses, riding lessons, a covered riding arena and horse trails throughout Mountain Park complete the picture.

MARKET PLACE

Mountain Park's first commercial center, the Market Place, offers goods and services that range from ice cream cones to floor coverings. A nearby service station adds to the convenience.



DIRECTIONS: Take Interstate 5 south to the Capitol Highway exit, then drive past Portland Community College to Mountain Park signs. Also accessible from Lake Oswego on Country Club Road to Kerr, from southwest Portland via Boones Ferry Road to Kerr, or from Beaverton via Highway 217 to Bonita Road, then left on Carman Drive.

Telephone 636-5652



44

map
key

Mountain Park