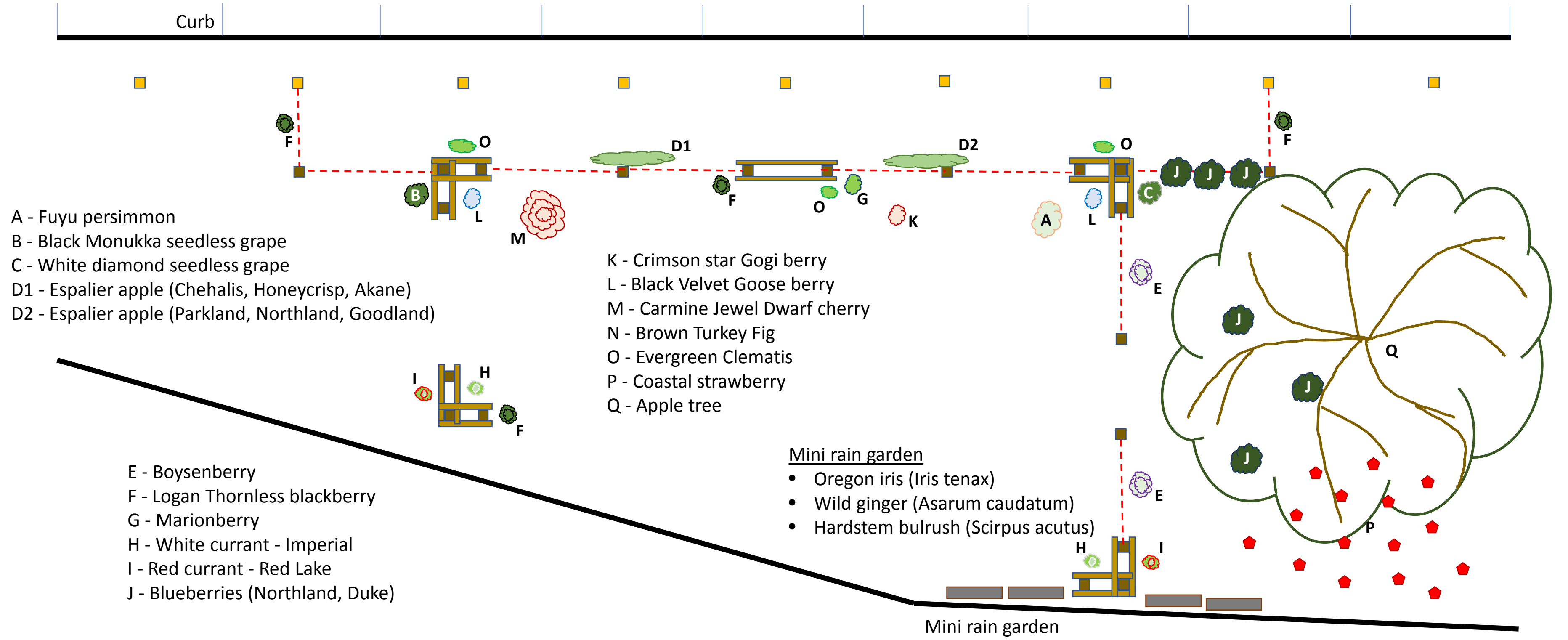


MPHOA Clubhouse – Edible Garden 2019



- A - Fuyu persimmon
- B - Black Monukka seedless grape
- C - White diamond seedless grape
- D1 - Espalier apple (Chehalis, Honeycrisp, Akane)
- D2 - Espalier apple (Parkland, Northland, Goodland)

- K - Crimson star Gogi berry
- L - Black Velvet Goose berry
- M - Carmine Jewel Dwarf cherry
- N - Brown Turkey Fig
- O - Evergreen Clematis
- P - Coastal strawberry
- Q - Apple tree

- E - Boysenberry
- F - Logan Thornless blackberry
- G - Marionberry
- H - White currant - Imperial
- I - Red currant - Red Lake
- J - Blueberries (Northland, Duke)

- Mini rain garden
- Oregon iris (*Iris tenax*)
 - Wild ginger (*Asarum caudatum*)
 - Hardstem bulrush (*Scirpus acutus*)

Mini rain garden