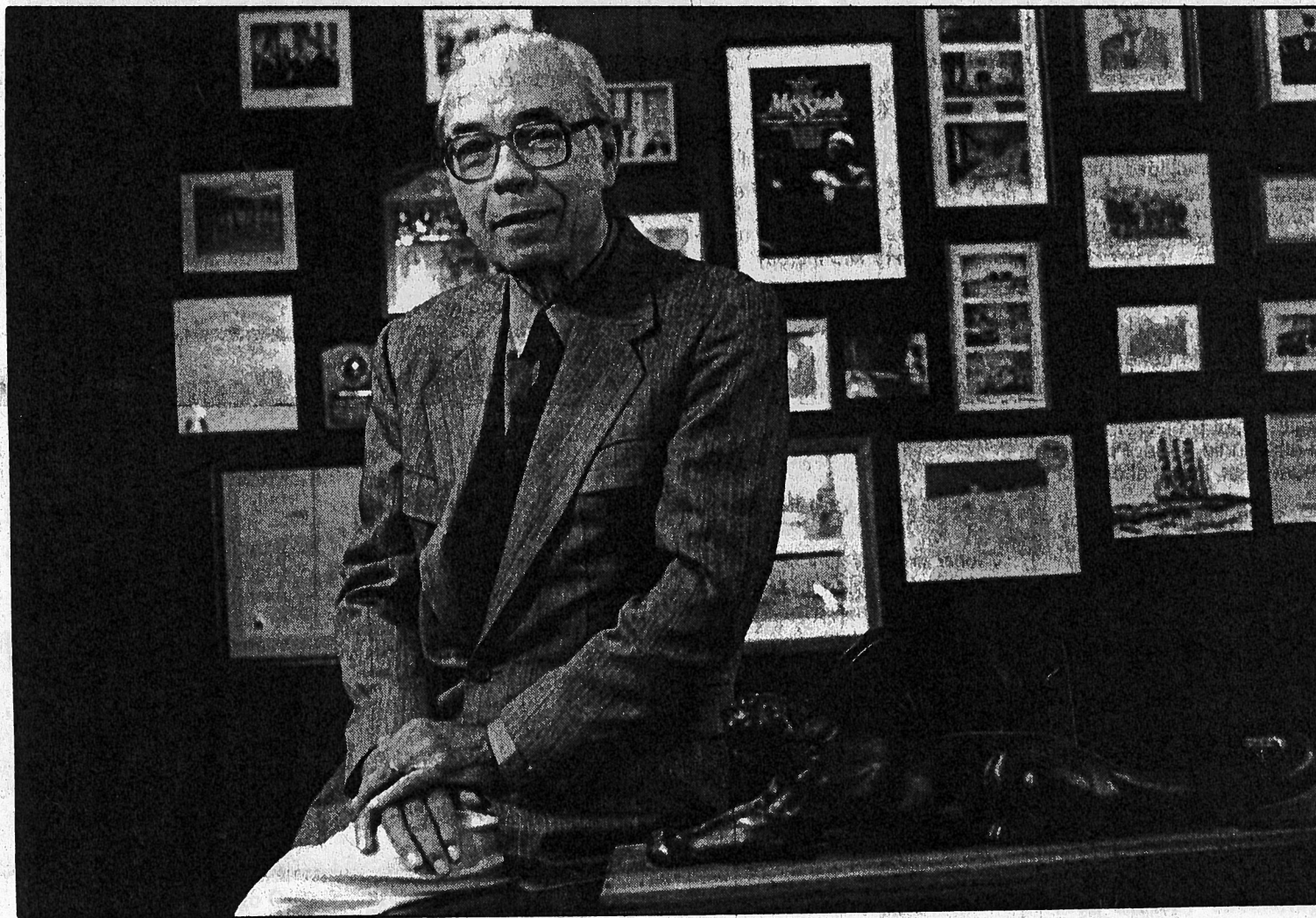


Lake Oswego Review

LAKE OSWEGO, OREGON



CARL HALVORSON is surrounded by memorabilia in the conference room of his Mountain Park office. (Staff photo by Vern Uyetake)

Vision revisited:

By SAMANTHA HANEY
Staff Reporter

More than 25 years ago Carl Halvorson had his eye on Mount Sylvania — 700 acres of wooded hillside between Portland and Lake Oswego with a dazzling view of Mount Hood.

And he envisioned something special for the area, something different.

"The idea was that it would be a development where a person could be living in an apartment as a young person and later move into a spacious and palatial home," said Halvorson, who lived in Lake Oswego for 40 years. "I was envisioning an upwardly mobile potential."

Halvorson employed two designers to independently conceptualize a housing plan for the area. One came back with most



ly multi-family housing, the other with mostly single-family housing — Halvorson was looking for the perfect balance, he said.

It was in 1968 that Halvorson, Daryl Mason, Lem Nelson, Walt Arman and Gerson Goldsmith, brought their plans for Mountain Park to the attention of the city's Planning Commission.

Carl Halvorson, often called 'Mr. Mountain Park,' will watch 'dream community' turn 25 next week

Next week, Mountain Park celebrates not only its 25th anniversary but its renown as one of the country's best residential and recreational communities.

The initial \$175 million project called for a blend of townhouses, apartments and family homes, said Halvorson. The idea, he said, was to create an homogeneous population of ages, occupations and education.

With a build-out of 3,800 residences, Halvorson's plan still managed to reserve nearly half of the design for greenways, parks and native wooded areas.

"We did everything we could to maximize the view," he said.

Halvorson's plan embraced other modern features as well. Mountain Park was one of the first to underground utilities, and Halvorson constructed the

neighborhoods so that driveways did not exit onto the busy streets, thereby enhancing safety.

During the community metamorphosis from wooded mountainside to nationally recognized residential development, Halvorson said he found the most fun was picking the street names.

The streets in specific neighborhoods were named according to certain themes. The world's great philosophers are represented in a series of street names that include Cervantes, Erasmus, Aquinas and Spinoza — and there's a neighborhood whose streets recall Shakespeare's famous (and infamous) characters: Othello, Hotspur, Yorrick, Polonius and Falstaff.